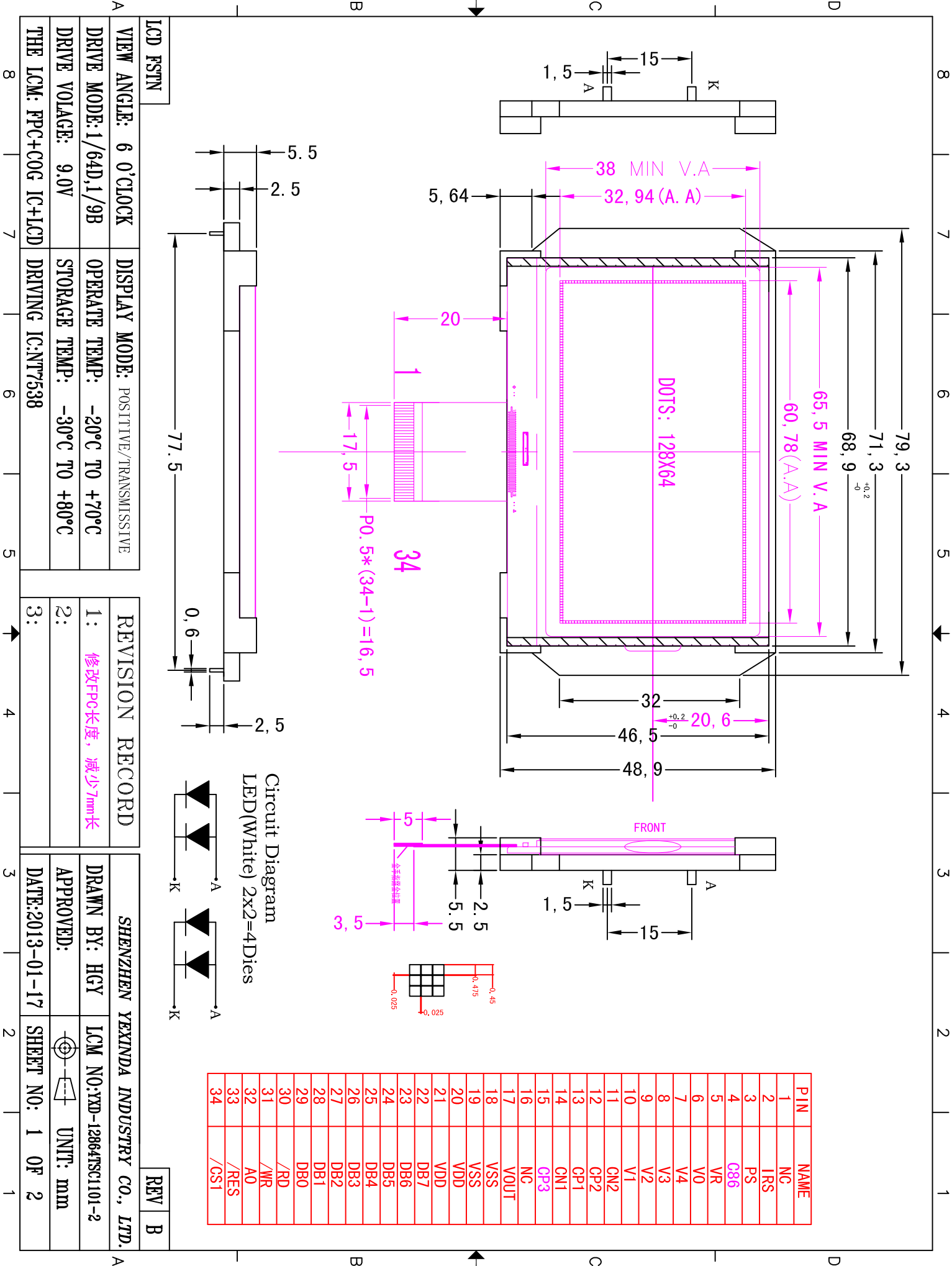


TO:

FROM: 焜新达技术部



LCD FSTN

VIEW ANGLE: 6 0'CLOCK

DRIVE MODE: 1/64D, 1/9B

DRIVE VOLTAGE: 9.0V

THE LCM: FPC+COG IC+LCD

REVISION RECORD

1: 修改FPC长度, 减少7mm长

2:

3:

SHENZHEN YEXINDA INDUSTRY CO., LTD.

DRAWN BY: HGY

APPROVED:

DATE: 2013-01-17

REV B

PIN	NAME
1	NC
2	IRS
3	PS
4	G86
5	VR
6	V0
7	V4
8	V3
9	V2
10	V1
11	CN2
12	CP2
13	CP1
14	CN1
15	CP3
16	NC
17	VOUT
18	VSS
19	VSS
20	VDD
21	VDD
22	DB7
23	DB6
24	DB5
25	DB4
26	DB3
27	DB2
28	DB1
29	DB0
30	/RD
31	/WR
32	A0
33	/RES
34	/CS1