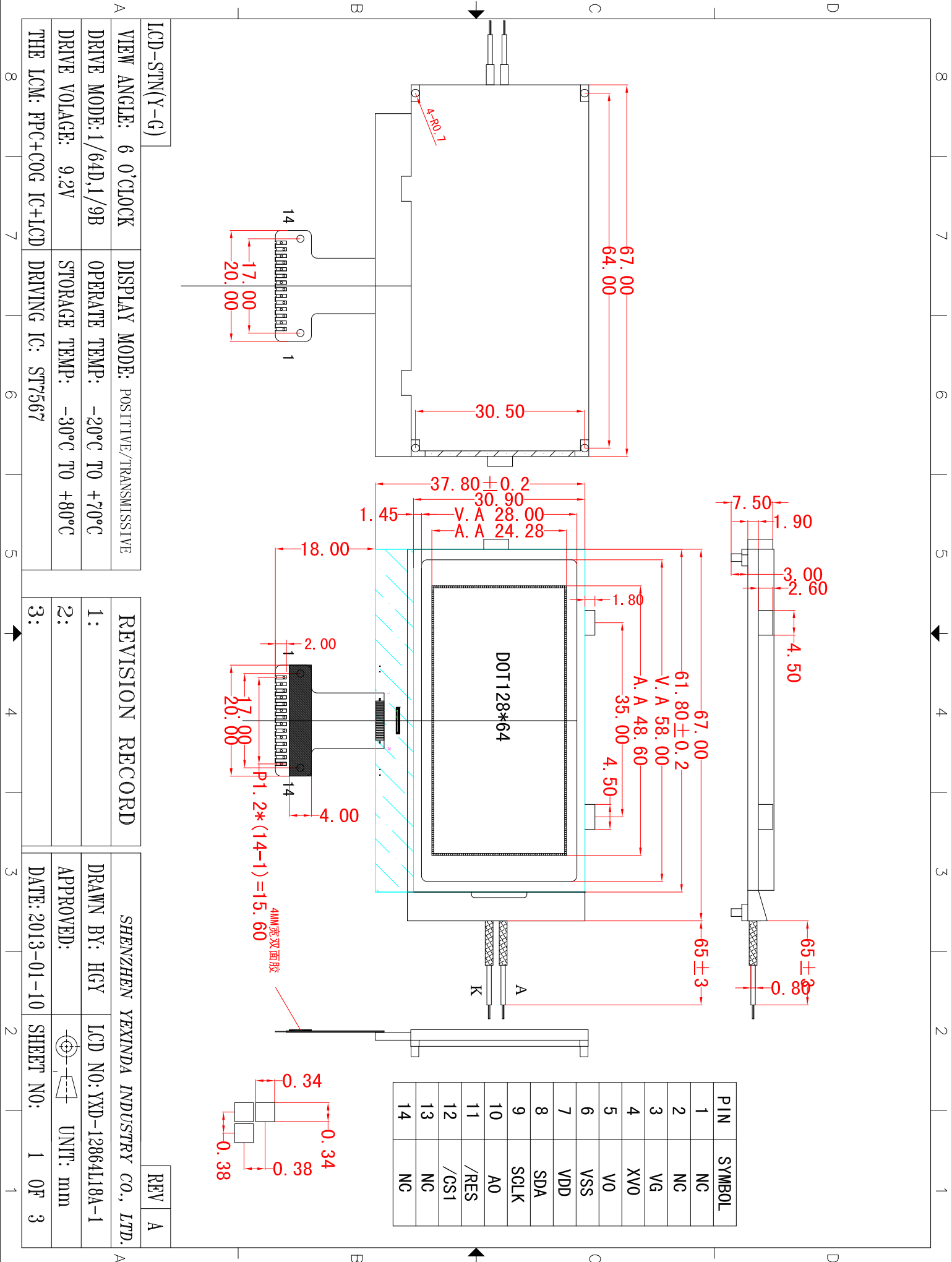


TO:

FROM: 焜新达技术部



LCD-STN(Y-G)

VIEW ANGLE: 6 O'CLOCK DISPLAY MODE: POSITIVE/TRANSMISSIVE

DRIVE MODE: 1/64D,1/9B OPERATE TEMP: -20°C TO +70°C

DRIVE VOLTAGE: 9.2V STORAGE TEMP: -30°C TO +80°C

THE LCM: FPC+COG IC+LCD DRIVING IC: ST7567

REVISION RECORD

- 1:
- 2:
- 3:

SHENZHEN YEXINDA INDUSTRY CO., LTD.

DRAWN BY: HGY LCD NO: YXD-12864L18A-1

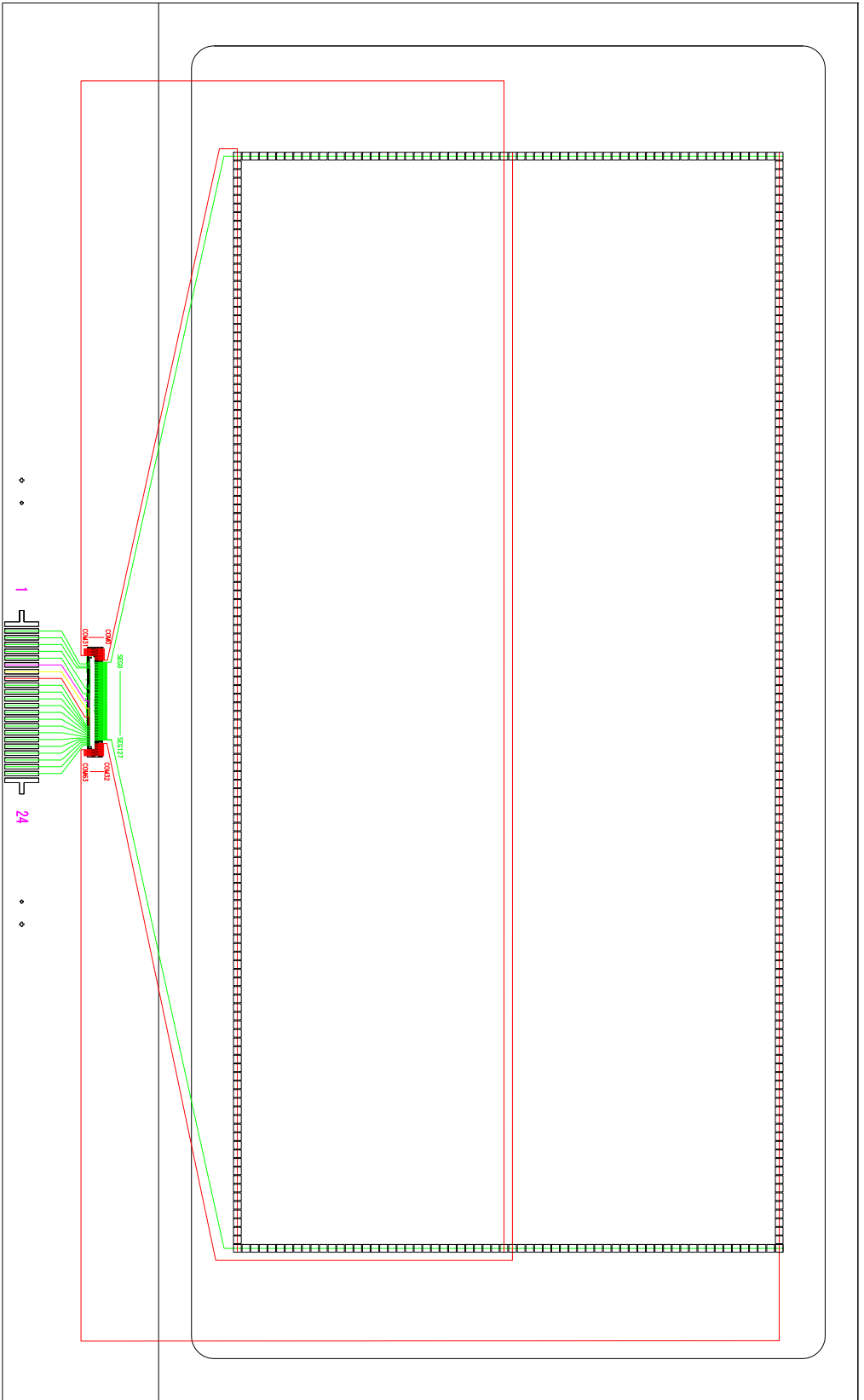
APPROVED: UNIT: mm

DATE: 2013-01-10 SHEET NO: 1 OF 3

REV A

TO:

FROM: 烨新达技术部



LCD-STN(Y-G)

VIEW ANGLE: 6 0'CLOCK

DRIVE MODE: 1/64D,1/9B

DRIVE VOLTAGE: 9.2V

THE LCM: FPC+COG IC+LCD

DISPLAY MODE: POSITIVE/TRANSMISSIVE

OPERATE TEMP: -20°C TO +70°C

STORAGE TEMP: -30°C TO +80°C

DRIVING IC: ST7567

REVISION RECORD

1:	
2:	
3:	

SHENZHEN YEXINDA INDUSTRY CO., LTD.

DRAWN BY: HGY

APPROVED:

DATE: 2013-01-10

REV A

A

B

C

D

REV A

A

B

C

D

REV A

A

B

C

D

REV A

A

B

C

D

REV A

A

B

C

D

REV A

A

B

C

D

REV A

A

B

C

D

REV A

A

B

C

D

REV A

A

B

C

D

REV A

A

B

C

D

REV A

A

B

C

D

REV A

A

B

C

D

REV A

A

B

C

D

REV A

A

B

C

D

REV A

A

B

C

D

REV A

A

B

C

D

REV A

A

B

C

D

REV A

A

B

C

D

REV A

A

B

C

D

REV A

A

B

C

D

REV A

A

B

C

D

REV A

A

B

C

D

REV A

A

B

C

D

REV A

A

B

C

D

REV A

A

B

C

D

REV A

A

B

C

D

REV A

A

B

C

D

REV A

A

B

C

D

REV A

A

B

C

D

REV A

A

B

C

D

REV A

A

B

C

D

REV A

A

B

C

D

REV A

A

B

C

D

REV A

A

B

C

D

REV A

A

B

C

D

REV A

A

B

C

D

REV A

A

B

C

D

REV A

A

B

C

D

REV A

A

B

C

D

REV A

A

B

C

D

REV A

A

B

C

D

REV A

A

B

C

D

REV A

A

B

C

D

REV A

A

B

C

D

REV A

A

B

C

D

REV A

A

B

C

D

REV A

A

B

C

D

REV A

A

B

C

D

REV A

A

B

C

D

REV A

A

B

C

D

REV A

A

B

C

D

REV A

A

B

C

D

REV A

A

B

C

D

REV A

A

B

C

D

REV A

A

B

C

D

REV A

A

B

C

D

REV A

A

B

C

D

REV A

A

B

C

D

REV A

A

B

C

D

REV A

A

B

C

D

REV A

A

B

C

D

REV A

A

B

C

D

REV A

A

B

C

D

REV A

A

B

C

D

REV A

A

B

C

D

REV A

A

B

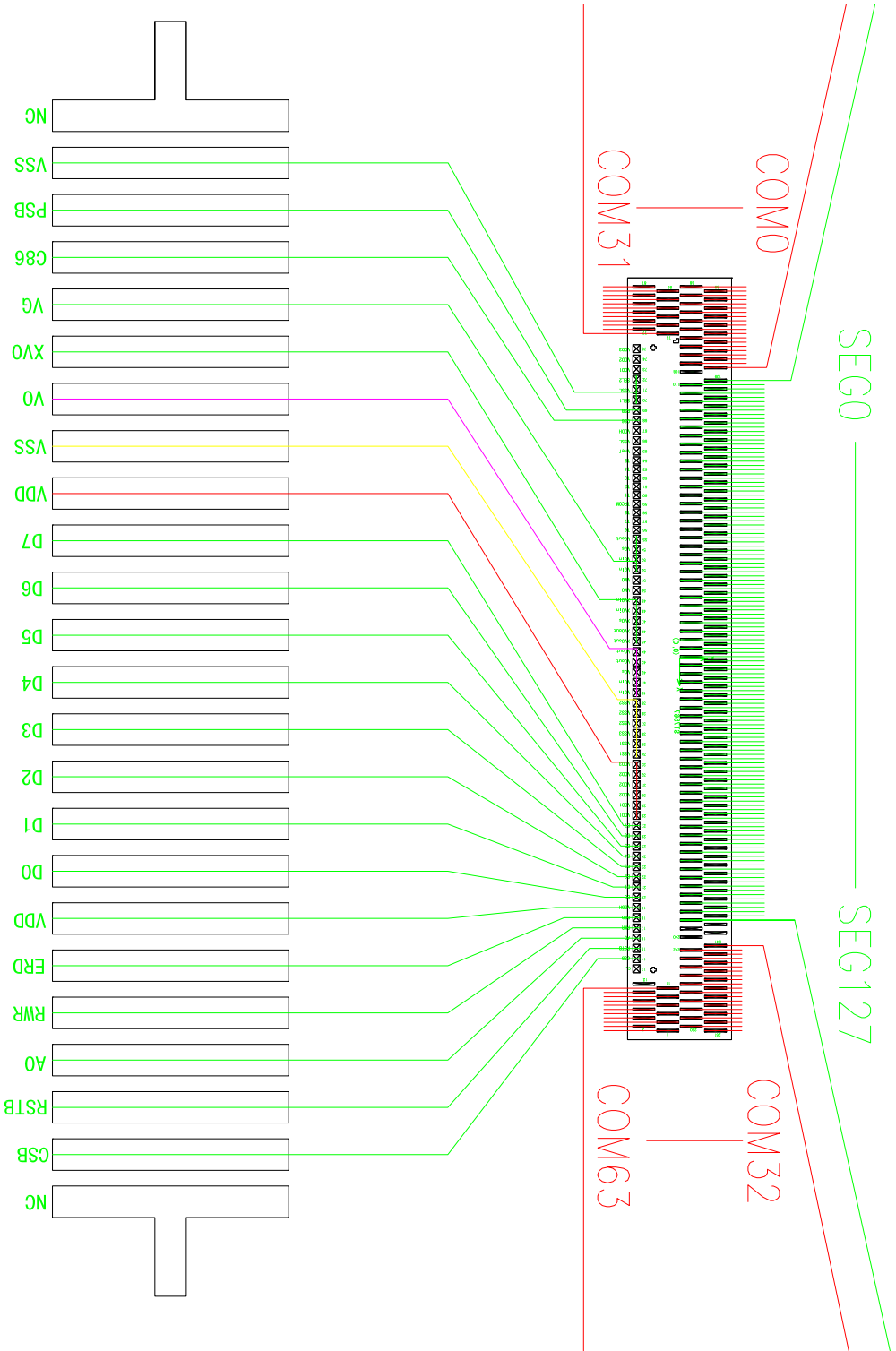
C

D

REV A

TO:

FROM: 烨新达技术部



LCD-STN(Y-G)

VIEW ANGLE: 6 0'CLOCK	DISPLAY MODE: POSITIVE/TRANSMISSIVE
DRIVE MODE: 1/64D,1/9B	OPERATE TEMP: -20°C T0 +70°C
DRIVE VOLTAGE: 9.2V	STORAGE TEMP: -30°C T0 +80°C
THE LCM: FPC+COG IC+LCD	DRIVING IC: ST7567

REVISION RECORD

1:	
2:	
3:	

SHENZHEN YEXINDA INDUSTRY CO., LTD.

DRAWN BY: HGY	LCD NO: YXD-12864L18A-1
APPROVED:	UNIT: mm
DATE: 2013-01-10	SHEET NO: 2 OF 3

REV A

24